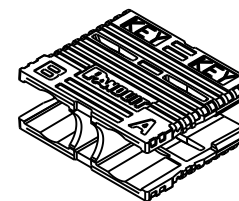
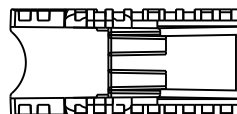
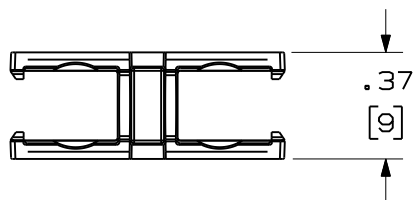
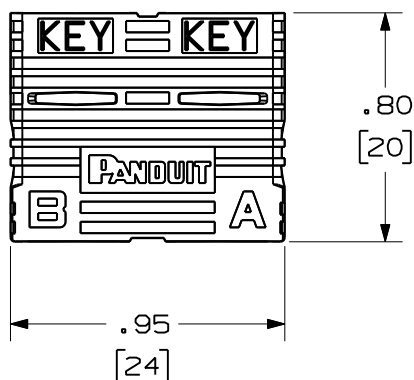



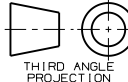
THIS COPY IS PROVIDED ON A RESTRICTED BASIS AND IS NOT TO BE USED IN ANY WAY DETRIMENTAL TO THE INTERESTS OF PANDUIT CORP.

PANDUIT PART NUMBER	COLOR	WEIGHT
NKFSCCLIP-L	RED	.176 lb/50 Pcs [79.8 g/50 Pcs.]



NOTES:

1. SEE CURRENT CATALOG FOR ADDITIONAL PART NUMBER SUFFIXES TO INDICATE COLOR AND OR PACKAGE QUANTITY.
2. SEE CATALOG FOR COMPLETE LIST OF PARTS APPLICABLE FOR USE WITH THIS PART.
3. MATERIAL: PLASTIC
4. ALL MATERIALS AND COMPONENTS USED MEET THE MATERIAL RESTRICTIONS OF RoHS, (EUROPEAN DIRECTIVE 2002/95/EC ON THE RESTRICTION OF HAZARDOUS SUBSTANCES) AS PROPOSED BY THE RoHS TECHNICAL ADAPTATION COMMITTEE.
5. DIMENSIONS IN BRACKETS ARE METRIC [mm].

REV	DATE	BY	CHK	DESCRIPTION	ECN	R	CUST	SUP	OTH	NETKEY DUPLEX SC CONNECTOR CLIP CUSTOMER DRAWING	
R	12-22-09	EFK		RELEASED TO PRODUCTION	01339-03					 PANDUIT ™ CORP. TINLEY PARK, ILL 60477	
										ALL DIMENSIONS ARE GIVEN IN INCHES UNLESS OTHERWISE SPECIFIED. DIMENSIONAL TOLERANCES ARE: (.X) ±.03 (.XXX) ±.010 (.3) ±.03 (.8) ANGLES	
										DRAWING FILENAME MO1339B1_DC_NETKEY/05A	
										SCALE	
										PART NO. NKFSCCLIP-L	
										DRAWING NO. 01339-03	
										SIZE A	
										 THIRD ANGLE PROJECTION	
										DRAWN BY EFK DATE 12-22-09 CHK'D	
										REVIEW DRAWING NUMBERS	